

An aerial photograph of a construction site. In the upper right, a large, rectangular building is under construction, with its structural framework visible. A road or path runs diagonally from the bottom left towards the center. The surrounding area is a mix of cleared land and some vegetation.

Lyneham Banks Update

14th March 2023

Background

- Landslip - February 2022
- Continued Movement
- Initial Monitoring
- Site Safety
- Ground Investigations



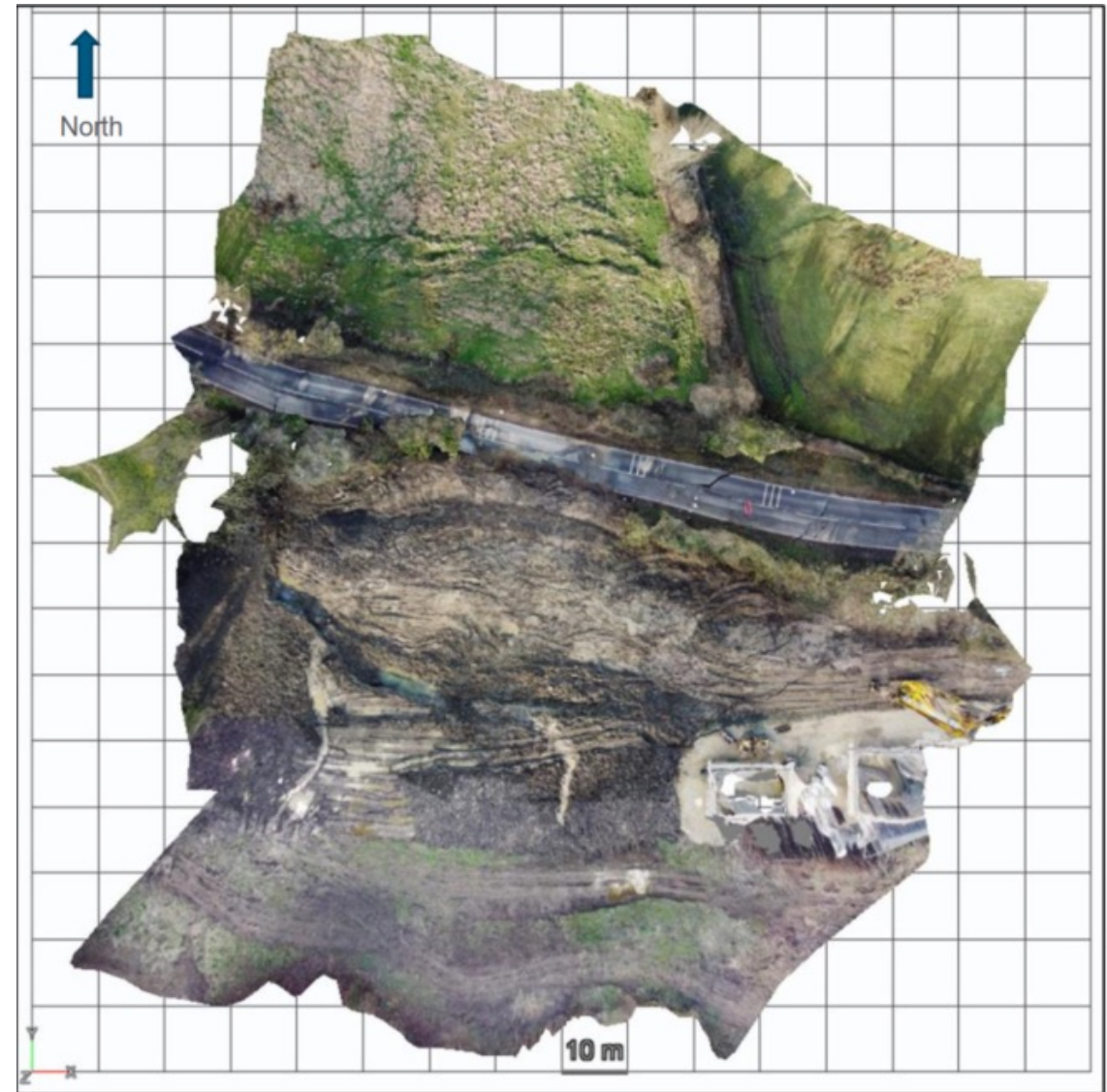
History of Movement

- 1940's – 1981 – Concrete Slabs
- 1981 – Counterforts & Granular replacement
- 1991 – Detailed slope study
- 2022 – Major failure



What have we been doing

- Visual Site visits
- Drone Surveys
- Traffic Management
- Ground Investigations
- Initial Options Assessment



Ground Investigations

- November - December 2022
- 31 Boreholes
- 21 Trial Pits
- Water sampling
- Wide scope
- Longer term monitoring



Traffic Management

- Traffic Counts
- Key Changes in November 22
- Evolving situation



Next Steps

- Ground Investigation Report
- Ongoing Monitoring
- Optioneering
- Design
- Construction



Communications

- Website - <https://www.wiltshire.gov.uk/article/6085/B4069-Lyneham-Banks>
- Quarterly Newsletter (Next - May 2023)
- Lyneham Banks Webinar – Late April



An aerial photograph of a river flowing through a landscape. In the upper left, there is a building complex, possibly a farm or industrial site, with several vehicles parked nearby. A road runs horizontally across the middle of the image, with a bridge crossing the river. The river itself is wide and appears to have some rapids or a change in flow. The surrounding land is covered with vegetation, including trees and shrubs. The overall tone is somewhat desaturated, giving it a historical or documentary feel.

Thank You

Wiltshire Council

The logo for Wiltshire Council, featuring a stylized white wave or swoosh line beneath the text.