



**Clerk to Council: Elizabeth Martin**

Website: <https://www.lynehamandbradenstoke-pc.gov.uk/>  
Email: [Parish.clerk@lynehamandbradenstoke-pc.gov.uk](mailto:Parish.clerk@lynehamandbradenstoke-pc.gov.uk)  
Telephone: 01249 561020  
Facebook: <https://www.facebook.com/Lynehamandbradenstokeparishcouncil/>

Ivy House  
72 The Green  
Poulshot  
SN10 1RT

# LBPC ALLOTMENT FLOOD PLAN

February 2024, for consideration and agreement by the Lyneham and Bradenstoke Parish Council.

## HISTORY

The Allotments and neighbouring properties have been subject to flooding for at least the last 5-6 years, this has caused damage to belongings. In previous years the parish council has acted upon this and reinstated the allotment drains which had fallen into disrepair.

Further, the Parish Council installed a French drain to the Playing fields to reduce the risk of standing water on the Rec and reduce the 'flow' to the low point at the allotments.

Following the storm of October 2023, termed the worst since 2007, significant flooding was observed to the Allotments, flooding to properties in Church Park, with water flooding across roads and gardens.

The Parish Council engaged an independent survey, documented the Wiltshire County Council (WCC) Flood Risk assessment for the area impacted and sought input from historic OS maps. As part of this process, history of the site was sought from long term allotment holders.

Further, it is noted the creation of the Solar Farm and the required implementation of the Swales and Ditches to prevent water run off to the North of the site boundary. The MOD have been requested to determine if the Swales and ditches are in good order, at the time of this report the outcome is awaited.



## KNOWLEDGE BASE

Appendix 1 The plans from WCC Flood Risk Assessment and historic OS maps, marked to detail the historic drainage routes from the 'Dew Pond' through the allotments and to the Lillybrook.

Appendix 2 details the surveyor report and recommendation.

Discussion with long term allotment holders confirmed the following.

1. The allotment drains were re-instated as far as possible given the restrictions some 3 years ago,
2. Sheds and other debris continue to be placed over the drain route to the eastern boundary adjacent to Church Park Park Homes.
3. 6-8 years ago, 3 allotment holders 'scraped' the top 2-3 inches of overgrown soil and dumped the resulting debris at the south eastern corner of the allotments. This location effectively blocked the drain route from the allotments to the Lillybrook.
4. It is stated that Vivo, the MOD contractor, attempted to unblock the drainage from the allotments to the Lillybrook when they were clearing the Lillybrook. The equipment in use however did not have sufficient reach.

## RECOMMENDATION AND ACTION

The surveyors contracted recommend re connection of the allotment drainage system to the Lillybrook. The history of the area, backed by observation would conclude that the allotments historically were connected to the Lillybrook, however over time the drainage system and indeed the Lillybrook fell into disrepair. The re-introduction of the connection would go some way to reduce flooding at the Allotments and surrounding areas.

It is noted from the WCC Flood Risk assessment that in severe inclement weather no 100% guaranteed flood prevention can be assured.



## Recommendation 1.

The Parish council contract to remove the earth barrier between the allotment and the Lillybook re-instating the historic drainage route. Further to improve this and safeguard against disrepair by installation of a suitable drainage pipe between the 2.

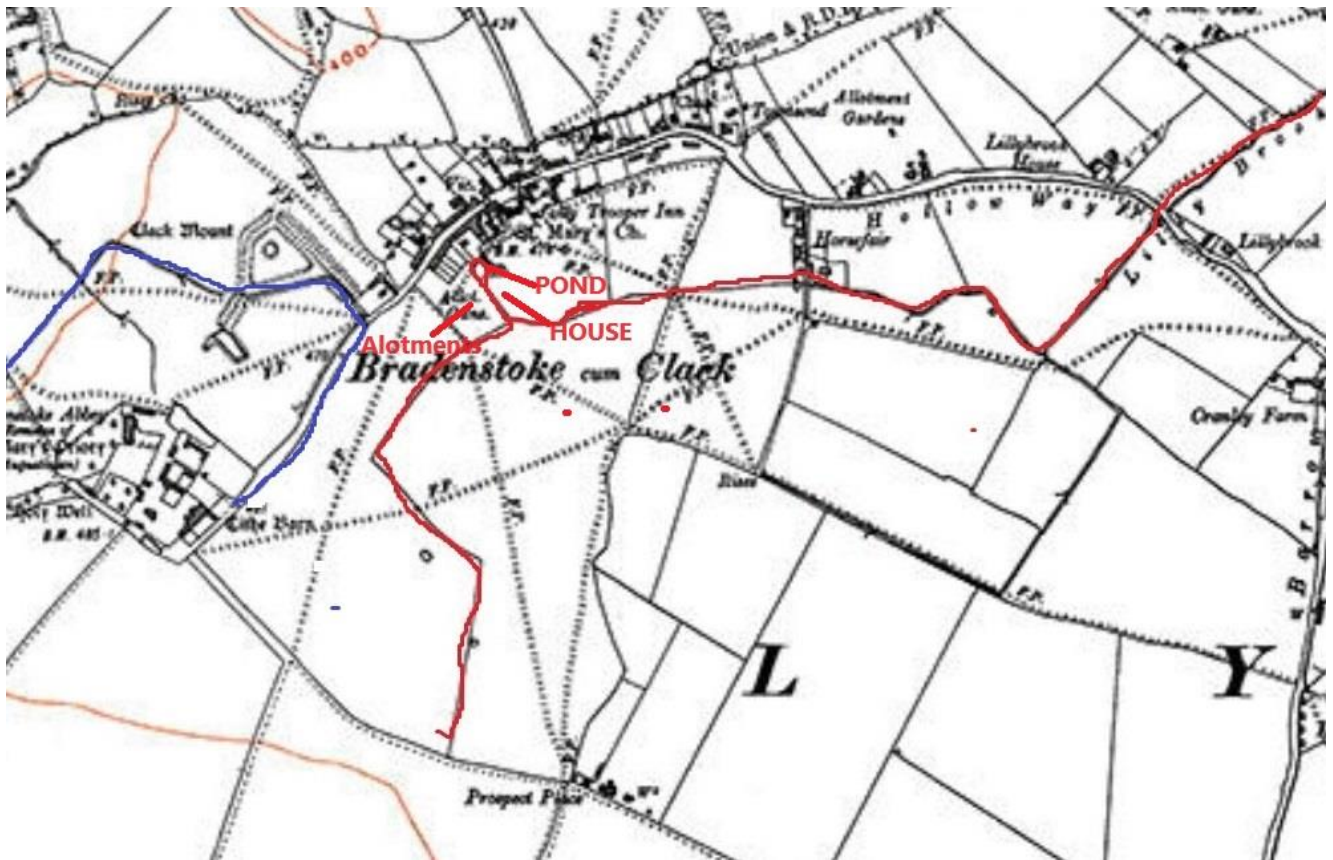
## Recommendation 2

MOD Lyneham confirm the condition of the Swales and Ditches at the northern boundary and make rectification if required.

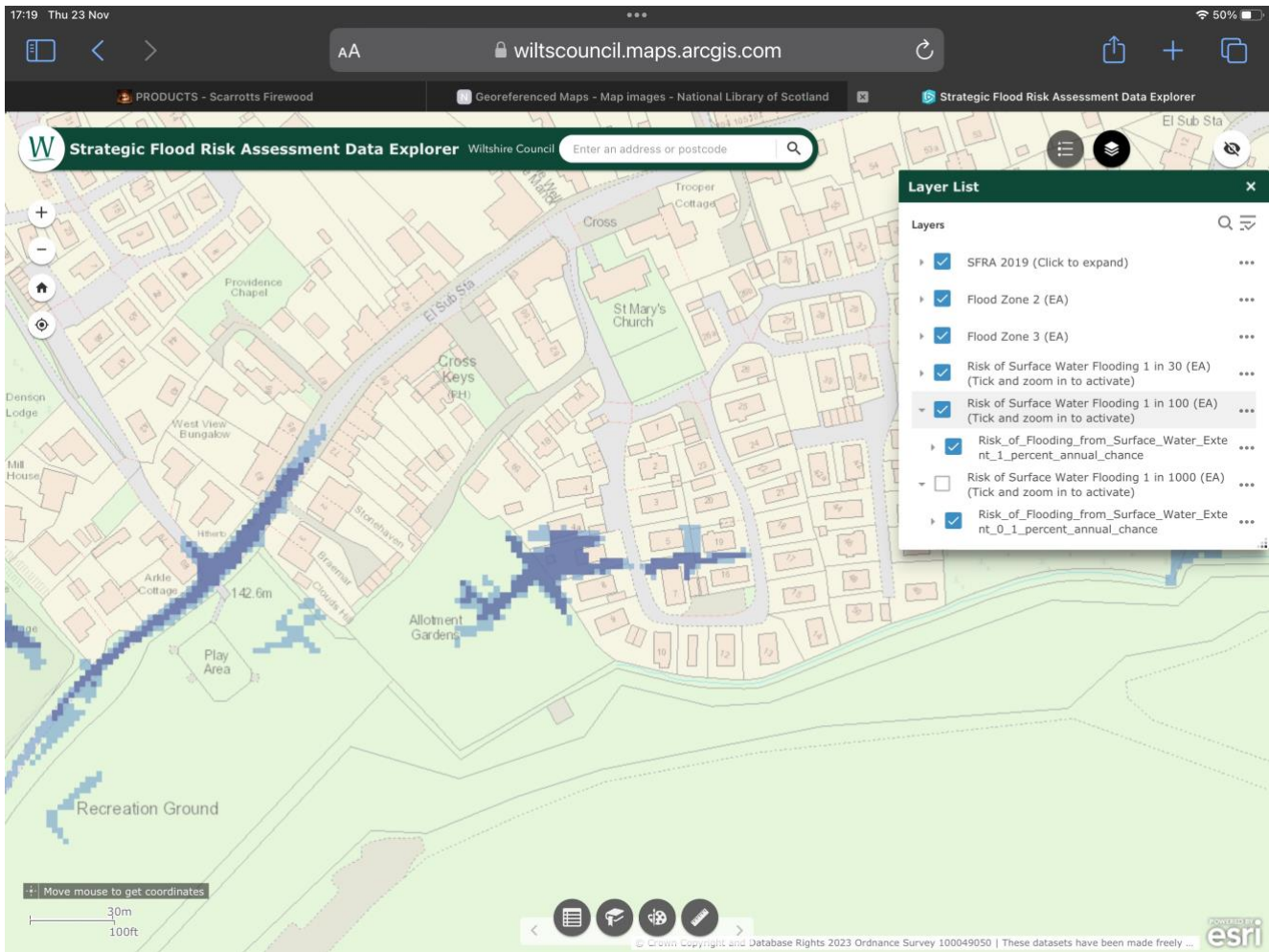
Stuart Bernard

February 2024

## APPENDIX 1



Map detailing the historical drainage routes. Red details the previous drain flowing through the allotments and onto the Lillybrook, also in Red.



WCC Flood Risk Assessment, as defined October 2023.



## APPENDIX 2

