

Wildflower near Bradenstoke Junction

Report by Frank Ball Vice Chairman L&BPC chairman Open spaces Committee

The wildflower area has been established over at least twenty years and has many rare specimens. It has been maintained by Sid and Joy Skull with help from Fred Gomme and others in the village.

RAF Lyneham gave permission for the wildflower meadow to be established many years ago. The MOD would like to continue with this arrangement.

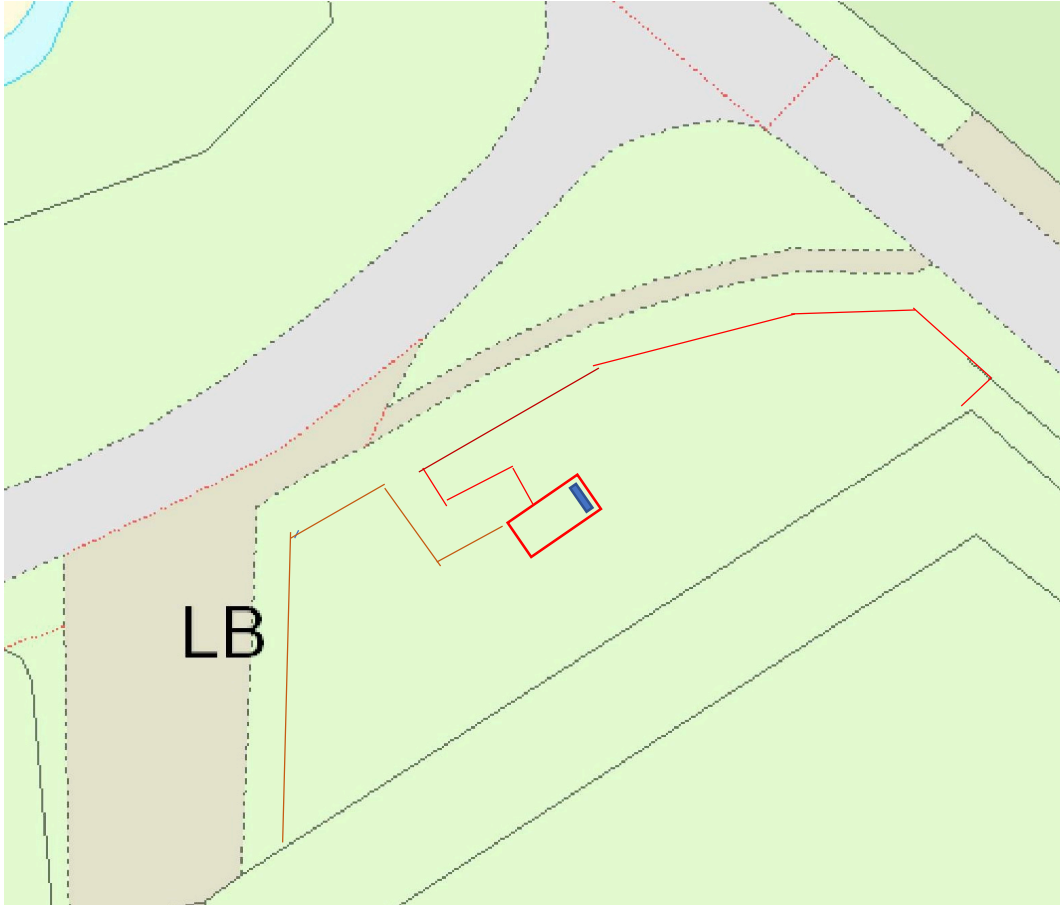
It has been suggested that more should be made to both protect and promote the Wildflower area.

The proposal is that a low fence be erected to stop people entering the area and a path be created to a viewing place. The viewing place is already there and is the concrete base of a now defunct BT building. The MOD have given permission for this erected, please see following pages.

The viewing place would have a Information board showing the different types of flowers and plants in the Wildflower area.

The next page shows a diagram of the wildflower area and the position of the proposed fence.

Wildflower area near bradenstoke Junction



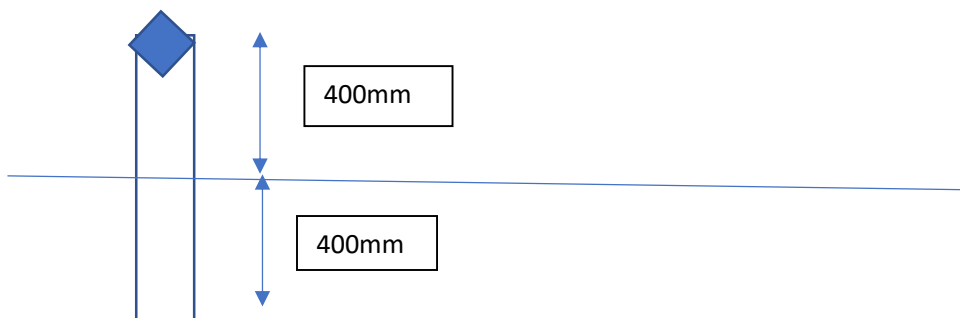
Red line new barrier 400mm high constructed with 75mm x 75mm 2.4m lengths on 100mm x 100mm posts.

Fence length 80m (3m x 34 @ £11.21 = £381.14 + 20%VAT = £457.36)

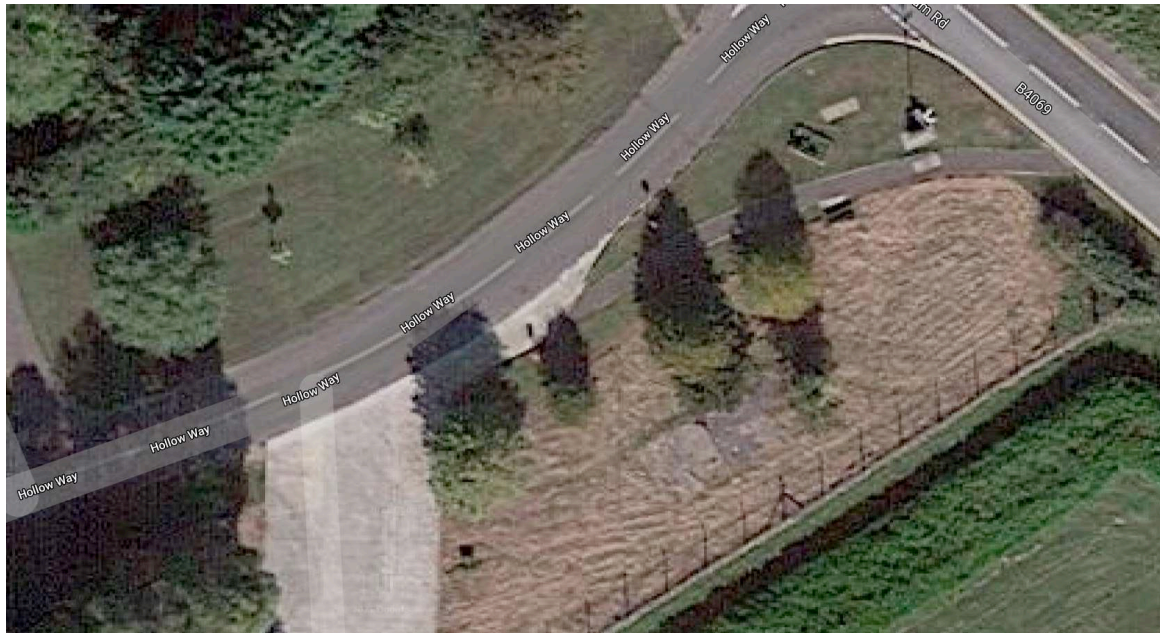
Vertical posts 100 x 100mm x 36 x 0.8m = 12 x 2.4M = 12 @£17.92 = £215.04 + 20% = £258.04

Postcrete 36 bags @ £4 = £144 + 20% VAT = £5 X 36 = £200

Labour ?



Wildflower area near Bradenstoke Junction



Wildflower Area Information Board

Land Mark A1 £965 without VAT + above fencing £900 = £1865



Whitehill A1 £1099 without VAT+ above fencing £900 =£1999



Greenbarnes A1 £1380 without VAT + above fencing £900 = £2280



